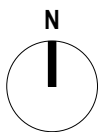
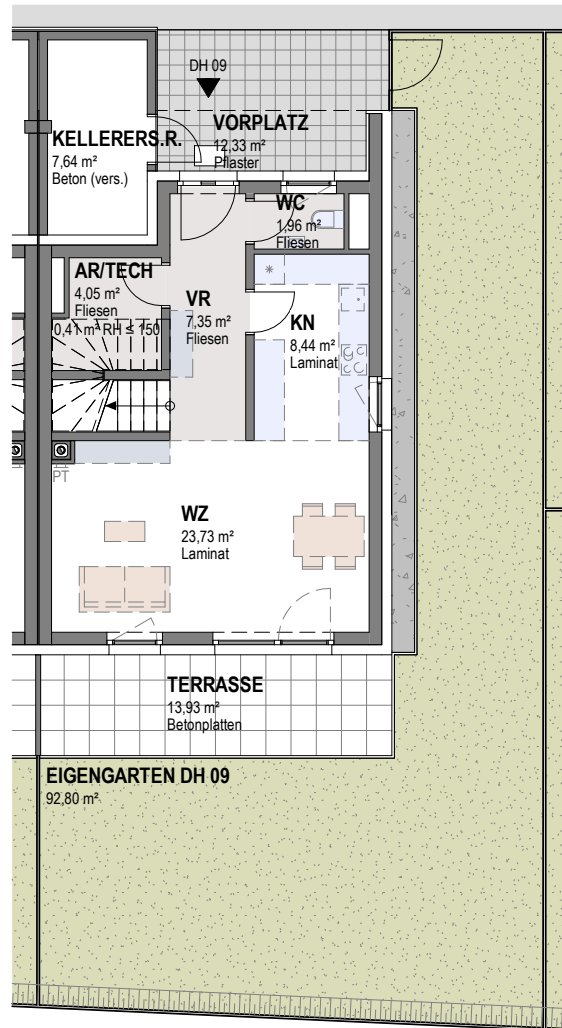


WOHNHAUSANLAGE PERSENBEUG
BERTHA V. SUTTNER-STRASSE 14/09

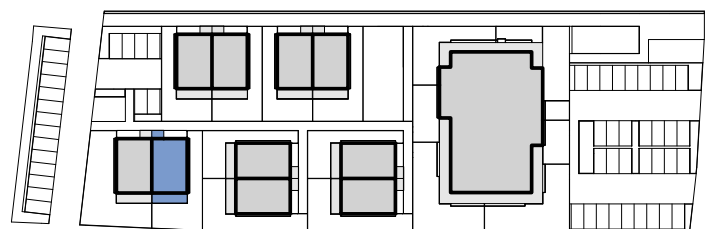
DH 09
ÜBERSICHT

SÜD
RAUM

GEMEINNÜTZIGE
WOHNBAU-
GESELLSCHAFT



0 5 m



ÄNDERUNGEN VORBEHALTEN

18.10.2023

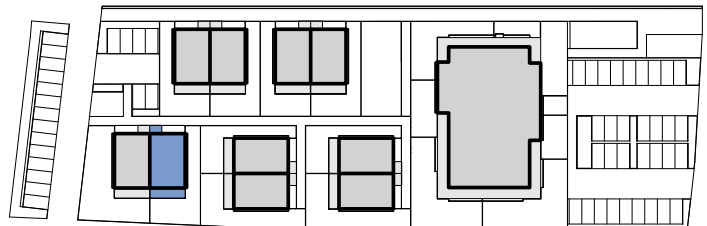
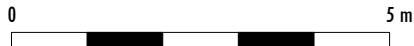
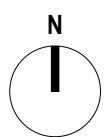
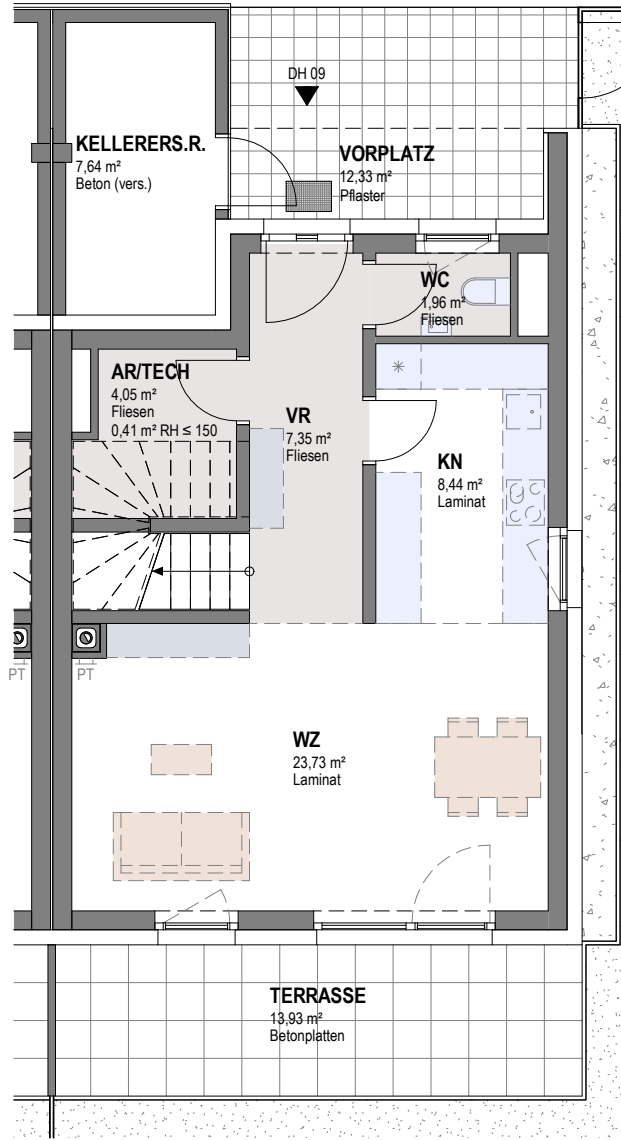
1:150

INDEX A

WOHNHAUSANLAGE PERSENBEUG
BERTHA V. SUTTNER-STRASSE 14/09

DH 09
ERDGESCHOSS

WOHNNUTZFLÄCHE	99,49 m ²
TERRASSE	13,93 m ²
KELLERERSATZRAUM	7,64 m ²
GARTEN	92,80 m ²
VORPLATZ	12,33 m ²

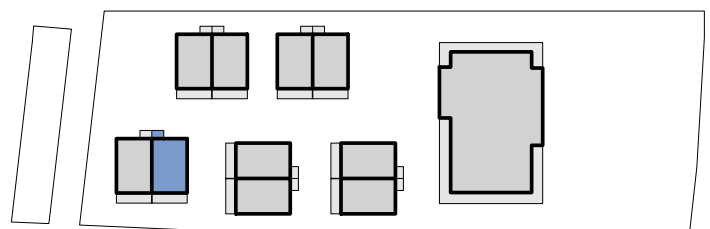
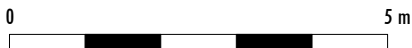
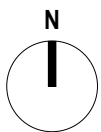
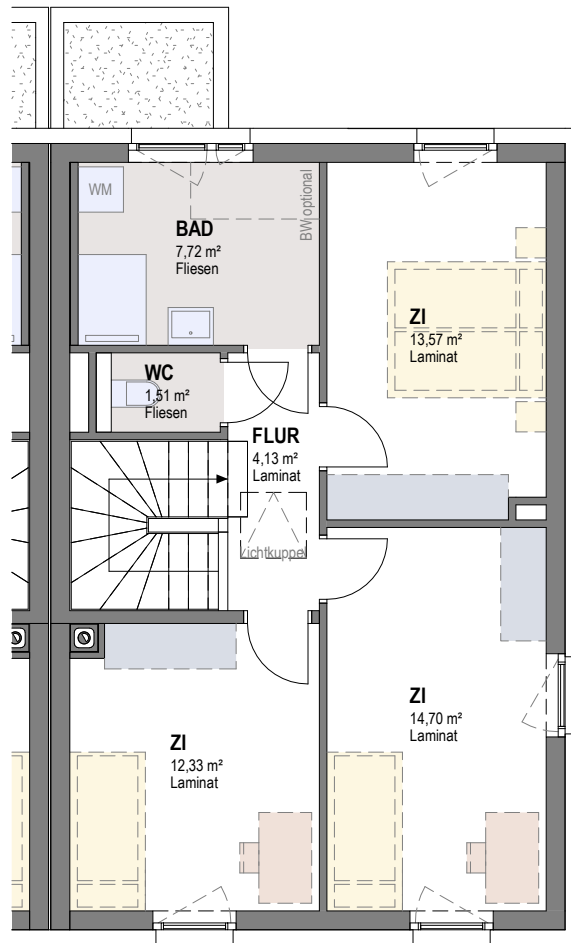


**WOHNHAUSANLAGE PERSENBUEG
BERTHA V. SUTTNER-STRASSE 14/09**

**DH 09
OBERGESCHOSS**

SÜD
RAUM

GEMEINNÜTZIGE
WOHNBAU-
GESELLSCHAFT



ÄNDERUNGEN VORBEHALTEN

18.10.2023

1:100

INDEX A