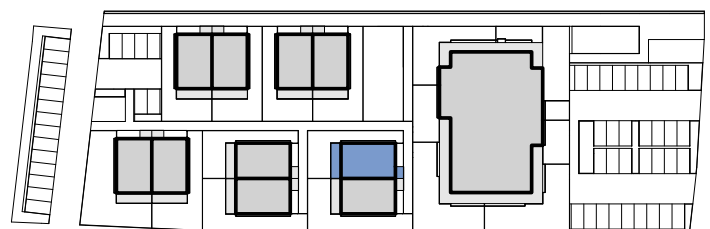
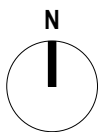
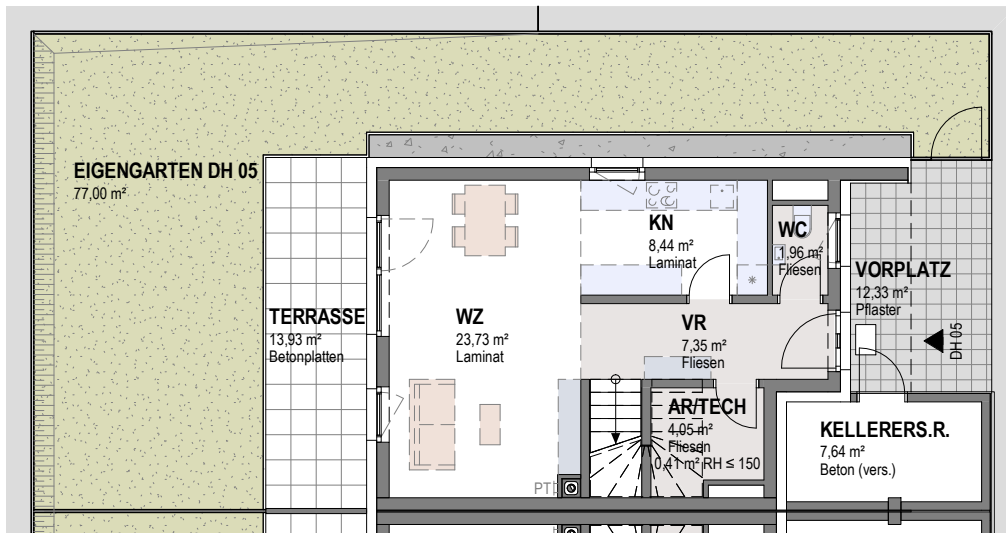


**WOHNHAUSANLAGE PERSENBEUG**  
**BERTHA V. SUTTNER-STRASSE 14/05**

**DH 05**  
**ÜBERSICHT**

SÜD  
RAUM

GEMEINNÜTZIGE  
WOHNBAU-  
GESELLSCHAFT



ÄNDERUNGEN VORBEHALTEN

18.10.2023

1:150

INDEX A

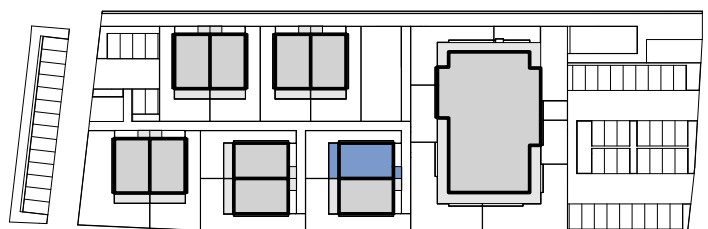
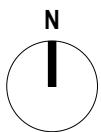
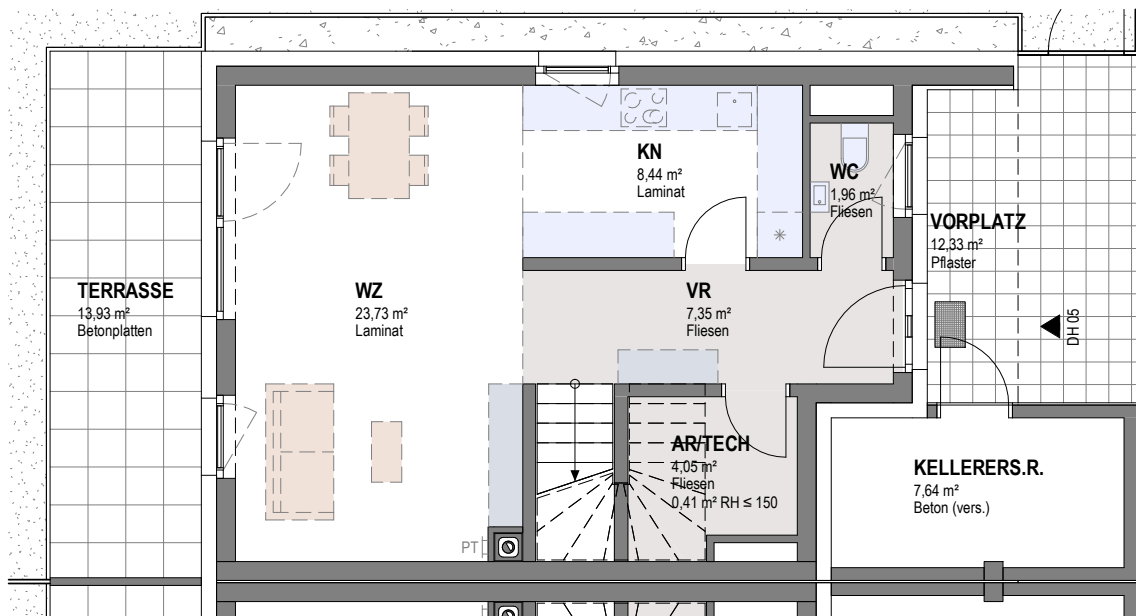
**WOHNHAUSANLAGE PERSENBEUG**  
**BERTHA V. SUTTNER-STRASSE 14/05**

SÜD  
 RAUM

GEMEINNÜTZIGE  
 WOHNBAU-  
 GESELLSCHAFT

**DH 05**  
**ERDGESCHOSS**

WOHNNUTZFLÄCHE	99,49 m <sup>2</sup>
TERRASSE	13,93 m <sup>2</sup>
KELLERERSATZRAUM	7,64 m <sup>2</sup>
GARTEN	77,00 m <sup>2</sup>
VORPLATZ	12,33 m <sup>2</sup>



ÄNDERUNGEN VORBEHALTEN

18.10.2023

1:100

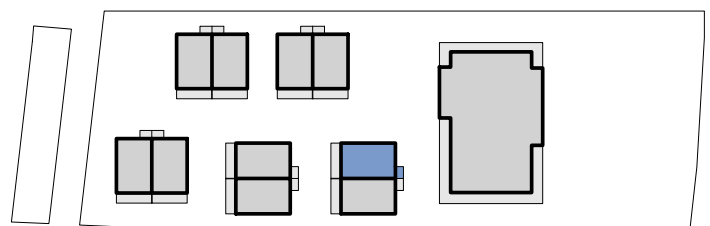
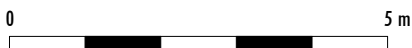
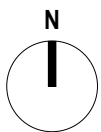
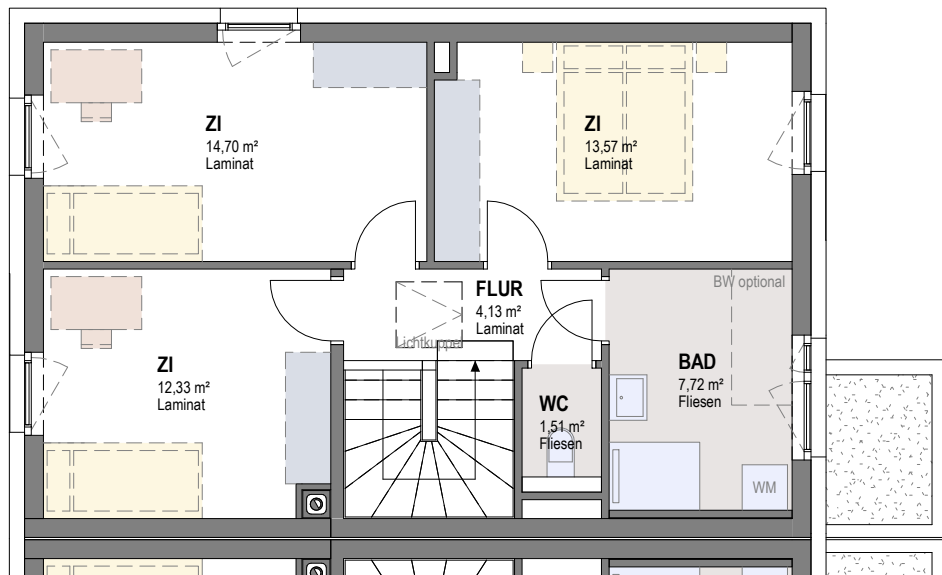
INDEX A

**WOHNHAUSANLAGE PERSENBEG  
BERTHA V. SUTTNER-STRASSE 14/05**

**DH 05  
OBERGESCHOSS**

SÜD  
RAUM

GEMEINNÜTZIGE  
WOHNBAU-  
GESELLSCHAFT



ÄNDERUNGEN VORBEHALTEN

18.10.2023

1:100

INDEX A