

# BVH. RITZING

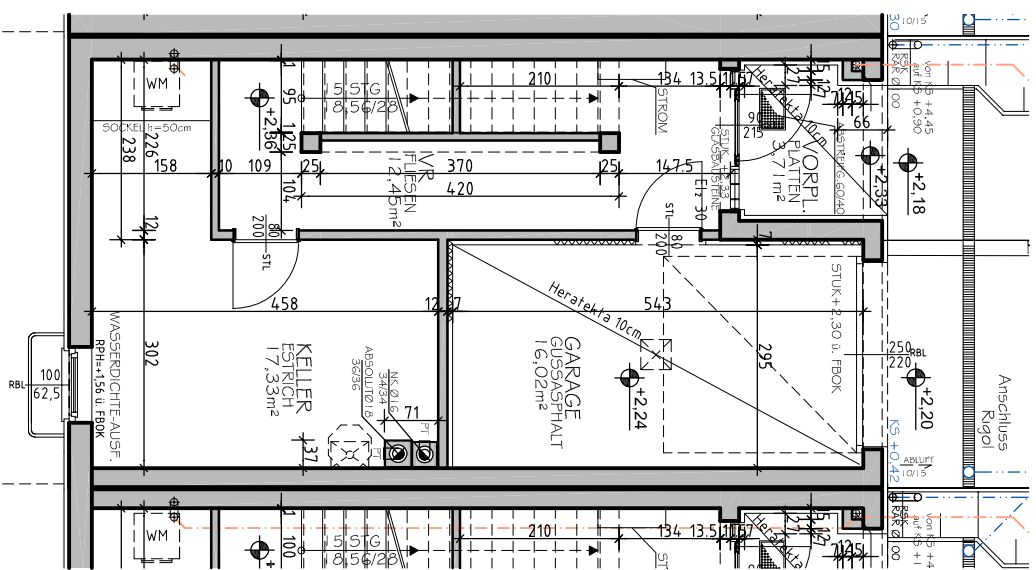
## WEINGARTENÄCKER T4-BT3 RH 1-4



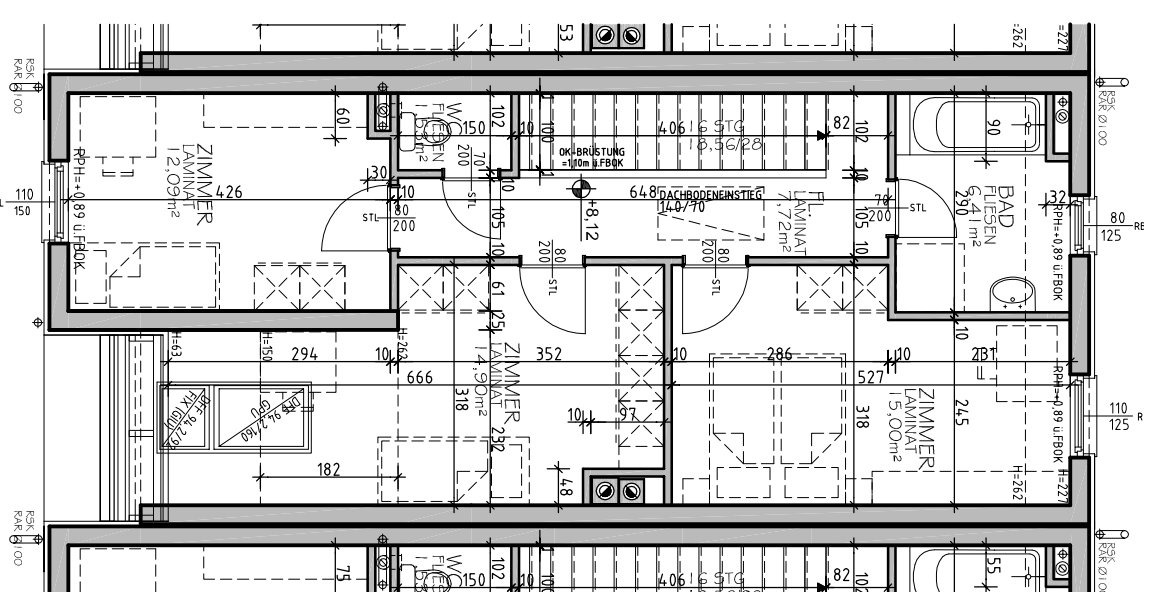
Erste Burgenländische Siedlungsgenossenschaft  
 Rathausplatz 1  
 7033 PÖTTSCHING

Wiener Strasse 66  
 2700 WR. NEUSTADT

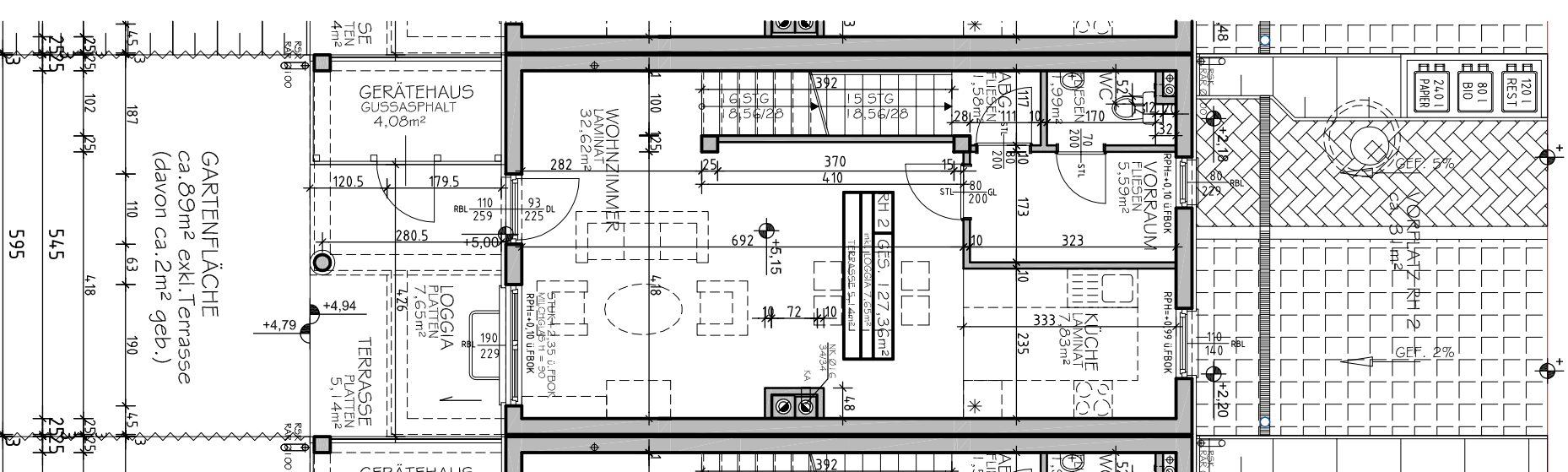
KELLER



OBERGESCHOSS

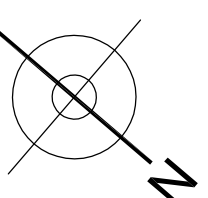
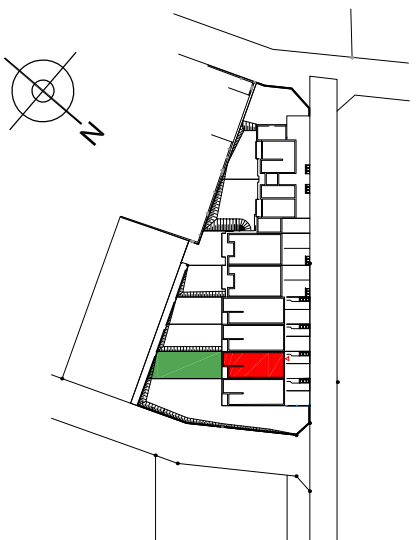


ERDGESCHOSS



GARTENFLÄCHE  
 ca. 89m² exkl. Terrasse  
 (davon ca. 2m² geb.)

KENNDATEN:		OKT 2008
REIHENHAUS 2	T4 - BT3	4 ZIMMER
GESCHOSS: KG - EG - OG		
WOHNNUTZFLÄCHE:	127,36 m²	
inkl. Loggia: 7,65m²	Terrasse: 5,14m²	



M=1:100  
 GEZ: PREMUZIC