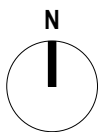
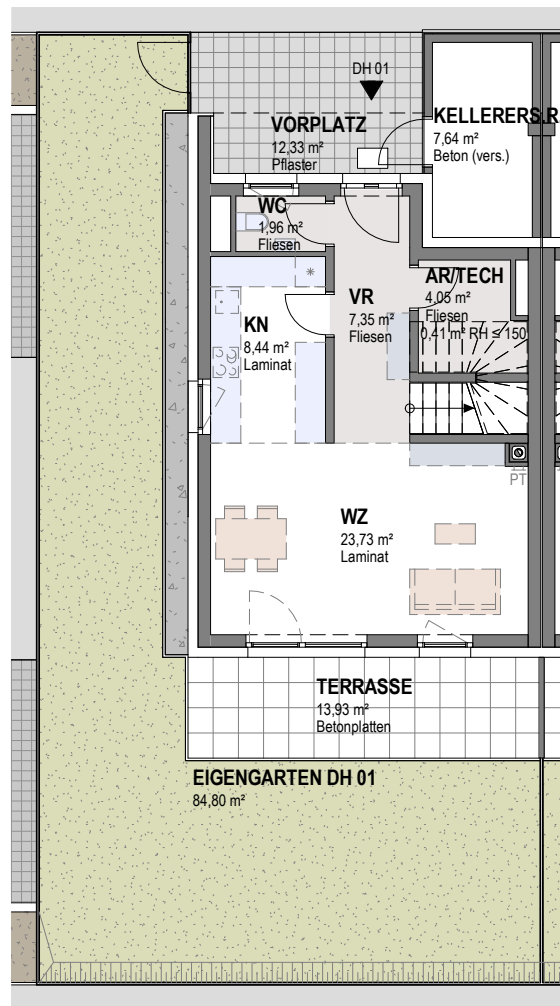


**WOHNHAUSANLAGE PERSENBEUG
BERTHA V. SUTTNER-STRASSE 14/01**

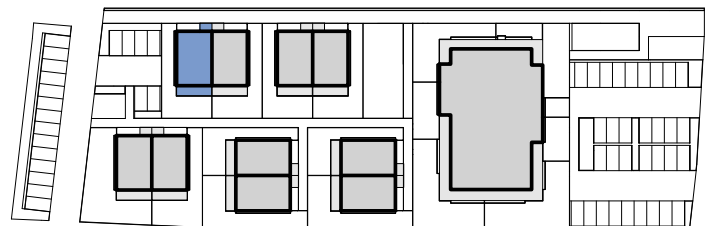
**DH 01
ÜBERSICHT**

SÜD
RAUM

GEMEINNÜTZIGE
WOHNBAU-
GESELLSCHAFT



0 5 m



ÄNDERUNGEN VORBEHALTEN

18.10.2023

1:150

INDEX A

WOHNHAUSANLAGE PERSENBEUG
BERTHA V. SUTTNER-STRASSE 14/01

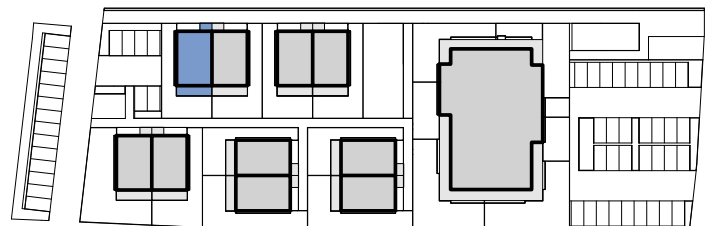
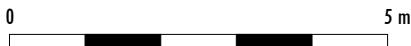
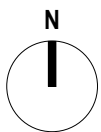
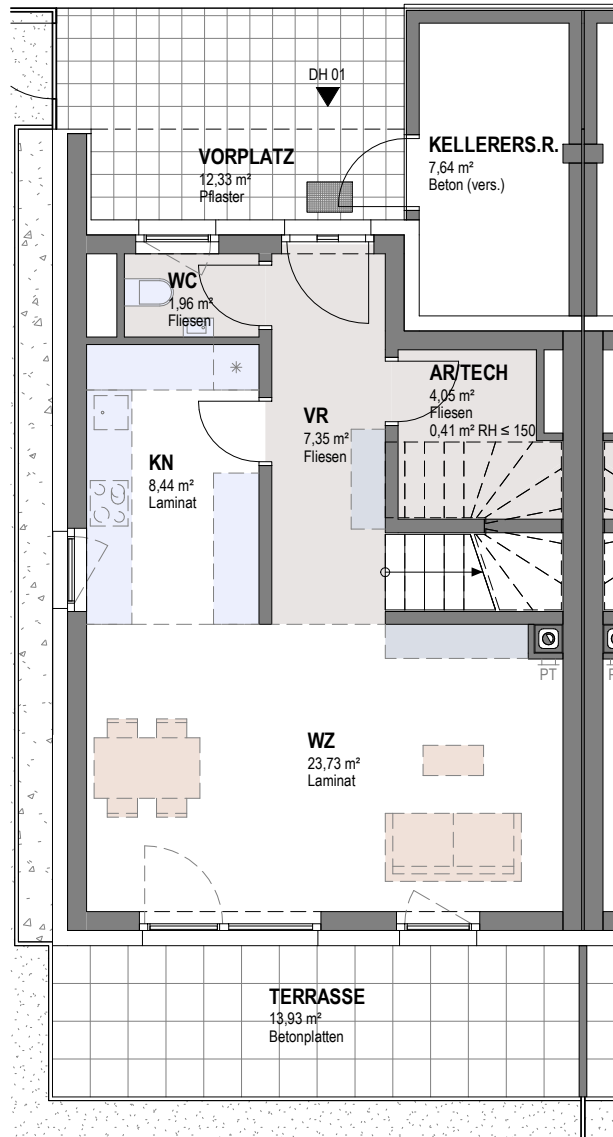
SÜD
 RAUM

GEMEINNÜTZIGE
 WOHNBAU-
 GESELLSCHAFT

DH 01

ERDGESCHOSS

WOHNNUTZFLÄCHE	99,49 m ²
TERRASSE	13,93 m ²
KELLERERSATZRAUM	7,64 m ²
GARTEN	84,80 m ²
VORPLATZ	12,33 m ²



ÄNDERUNGEN VORBEHALTEN

18.10.2023

1:100

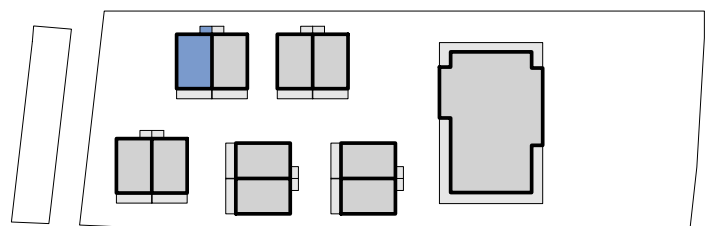
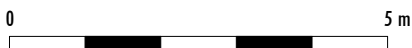
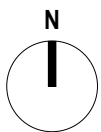
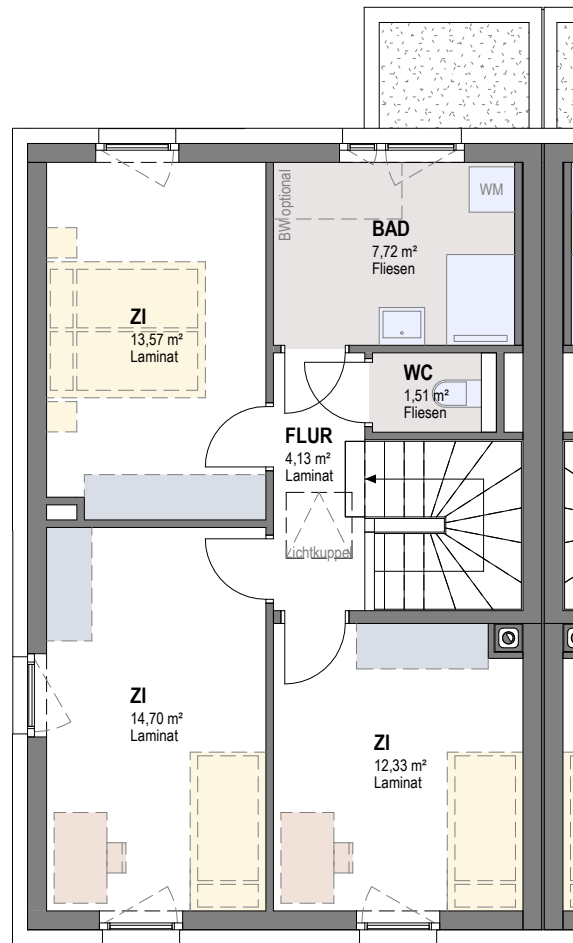
INDEX A

WOHNHAUSANLAGE PERSENBEUG
BERTHA V. SUTTNER-STRASSE 14/01

DH 01
OBERGESCHOSS

SÜD
RAUM

GEMEINNÜTZIGE
WOHNBAU-
GESELLSCHAFT



ÄNDERUNGEN VORBEHALTEN

18.10.2023

1:100

INDEX A